

# Comitrol® Processor Model 5600

## Controlled Particle Size Reduction



### SPECIFICATIONS

Length: . . . . . 91.38" (2321 mm)  
Width: . . . . . 56.57" (1437 mm)  
Height: . . . . . 67.63" (1718 mm)  
Net Weight: . . . . . 3126 lb (1421 kg)  
Motors: . . . . . Feeder - 2 HP (1.5 kW)  
. . . . . Impeller - 100 HP (75 kW)

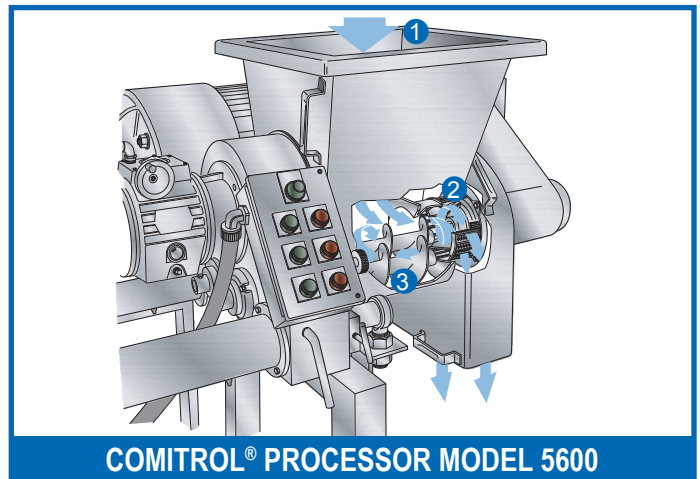
### APPLICATIONS

The Comitrol Processor Model 5600 has all of the benefits of the unique Comitrol size reduction principle, plus close cutting tolerances at an increased impeller speed of 5,600 revolutions per minute. The unit offers a high degree of particle size control to meet your product specifications and texture requirements.

The Model 5600 has a positive product feed and will deliver precise, cleanly cut particles from a variety of fresh or frozen tempered raw meat materials with little temperature rise. The Model 5600 produces consistent, high quality particles without the variance experienced using typical screw, pump-fed grinder-plate, or chopper-bowl style machines. The machine features continuous operation for uninterrupted production, and is designed for easy cleanup and maintenance.

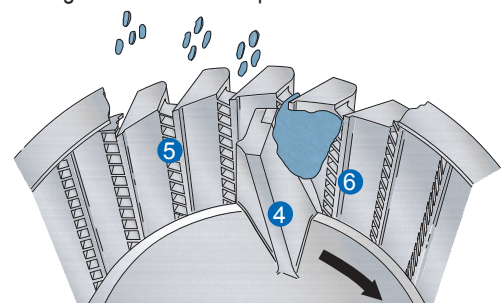


Cutting unit with cutting enclosure removed (for illustration).



### OPERATING PRINCIPLE

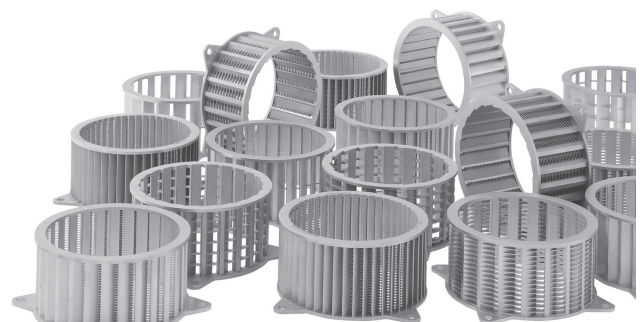
Product received by a hopper [ 1 ] is delivered to the cutting head and impeller [ 2 ]. Primary and secondary feed screws [ 3 ] rotate in opposite directions to ensure a uniform feed to the cutting area. Once in the impeller [ 4 ], centrifugal force moves the product outward to the impeller tips, which carry the product past the cutting edges of the stationary reduction head. Small portions of product projecting into the spaces between the separators are cut off into flakes by spaced columns of vertical knives [ 5 ]. These flakes fly outward and away from the cutting head. The wall surfaces between the vertical knives [ 6 ] are relieved to eliminate rubbing friction that would produce heat.



CUTTING HEAD ASSEMBLY

### TYPES OF CUTS

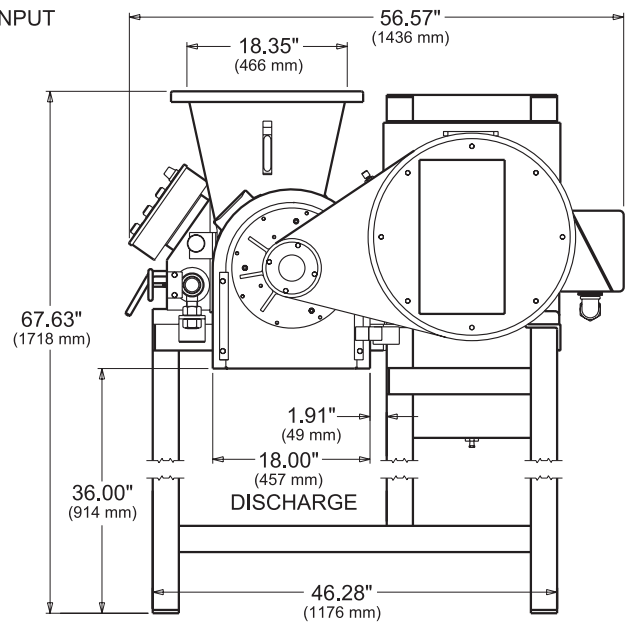
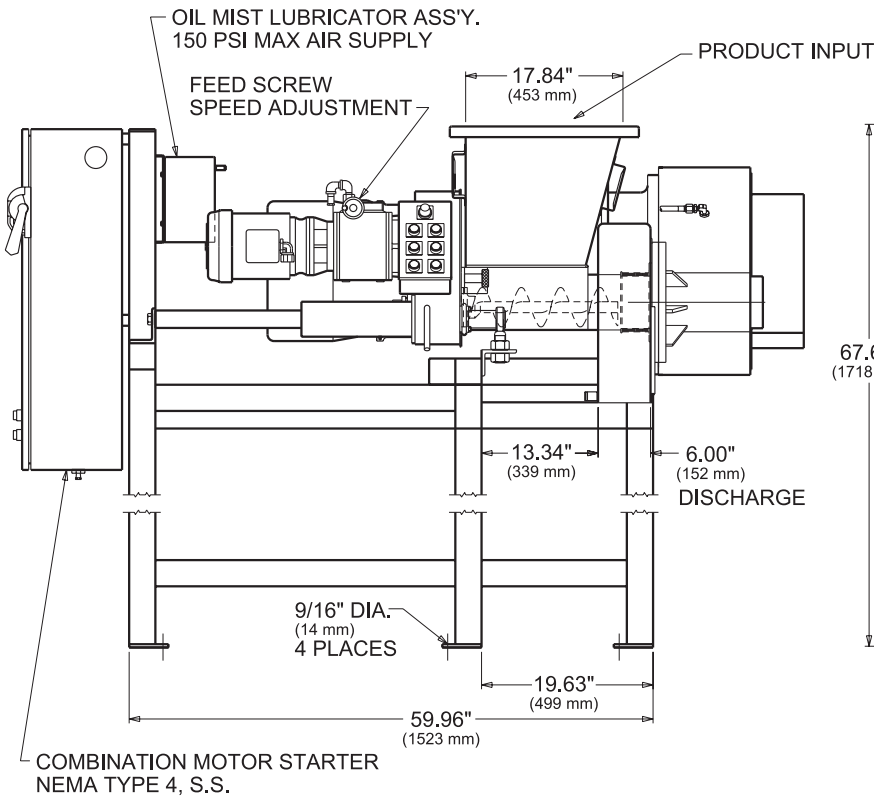
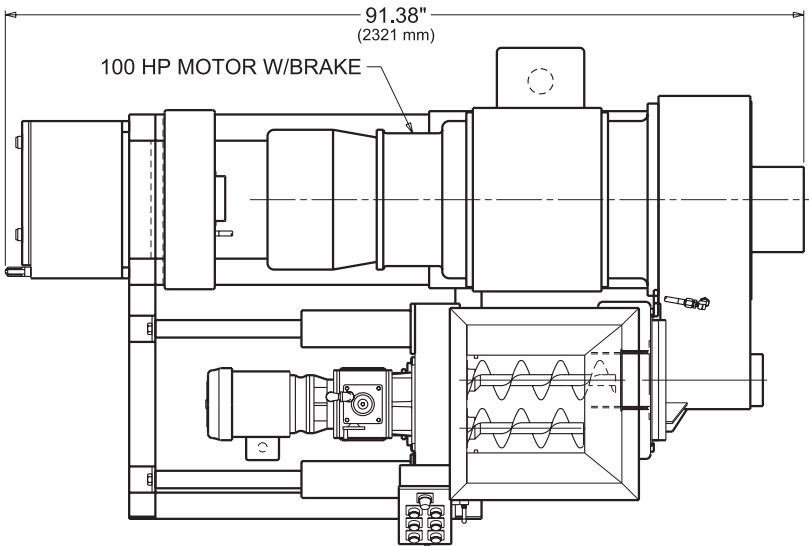
Particle sizes ranging from coarse to fine emulsions are possible. To ensure the proper combination of cutting parts, Urschel Laboratories, Inc. recommends your product be tested in one of our worldwide Product Test Cutting Facilities free-of-charge to find the most efficient solution to your size reduction needs.



If your product application is not mentioned on this page, contact your local Urschel representative to determine the most effective solution to your size reduction needs.

(over)

# Comitol® Processor Model 5600 Dimensional Drawing



## You Are Invited to Test Cut Your Product

Urschel Laboratories has a complete network of test facilities and experienced service and sales representatives around the world ready to work for you on any size reduction application. Contact your local Urschel Laboratories' representative to schedule a comprehensive, no-obligation test today at [www.urschel.com](http://www.urschel.com).



**URSCHEL®**  
*THE SIZE REDUCTION SPECIALISTS*

[www.urschel.com](http://www.urschel.com) | [info@urschel.com](mailto:info@urschel.com)